

# OR-TEC BLEND

## **Polymer Dosing System**

### **Series 500P / 750P**

By their very nature, polymers are difficult to handle. Since sludges have unique and diverse characteristics, it is essential to correctly regulate polymer dosing within the dewatering process.

**OR-TEC's** patented system utilizes hydraulic energy (high water velocity) to mix the polymer solution, eliminating any harmful damage to the polymer itself. *There is no mechanical mixing involved.*

#### **How it works**

Incoming dilution water is regulated through a flow control meter, then passed through an eductor. Polymer is drawn from its container and injected into the eductor by a metering pump. High water velocity through the eductor instantly activates the polymer.

The solution then flows to a retention vessel for further mixing and activation. A manifold is fitted on the inlet of the retention vessel for even disbursement of the polymer solution. Polymer is continuously mixed throughout the chamber by means of spheres. Due to the increasing size of the spheres, the mixing becomes gentler as the solution passes through the chamber.

#### **Easy installation & Maintenance**

Simply regulate the polymer feed (pump) to the on-site requirement. The unit is designed to deliver a precise rate of emulsion polymer to the activation zone. *There are no moving parts in the wet phase*, eliminating troublesome maintenance and costly downtime.

#### **Premium system, affordable cost**

The **OR-TEC BLEND 500-750P Series** polymer dosing system is used extensively in the water and wastewater treatment industry for the activation, blending and dosing of polymer as a solution. Its exceptional quality and surprisingly low price make it a very attractive and affordable system.



267 Northfield Road  
Bedford, OH 44146  
Phone: 440-232-4224  
Fax: 440-232-7775

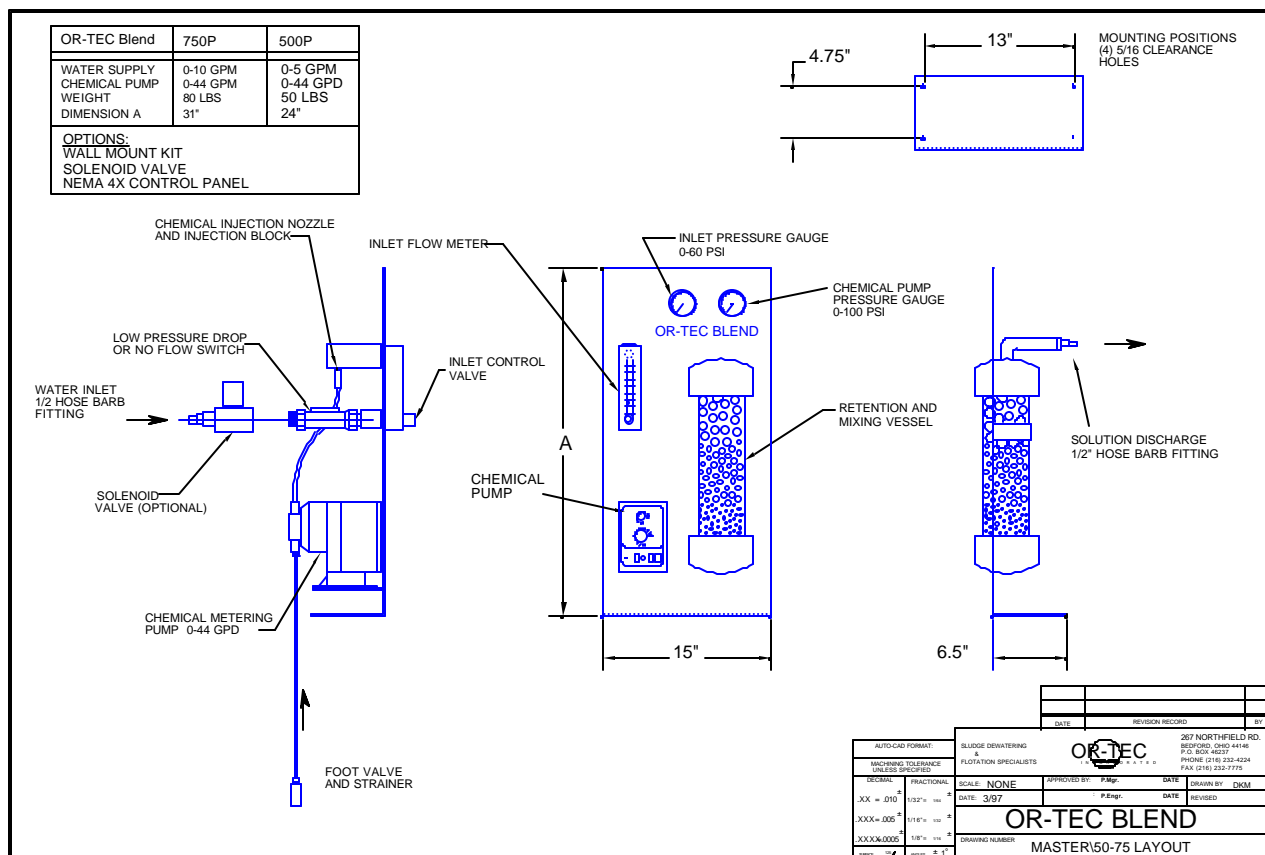
[www.or-tec.com](http://www.or-tec.com)



# OR-TEC Blend Polymer Dosing Systems

## Series 500P / 750P

Typical design....



### Process Description....

The OR-TEC BLEND is designed for the activation, blending and dosing of polymer as a solution for delivery into a waste-stream. It can be used to dose chemicals for belt presses, flotation systems, sand or filter media drying beds, centrifuges and in clarifiers.

Models:

#### Or-Tec Blend 500P

Polymer Output: Up to 1.83 gph (44 gpd)  
Dilution Water Output: Up to 300 gph  
Typical Solution Concentration: 0.25%  
This unit is typically used for dewatering applications (belt press/thickening)

#### Or-Tec Blend 750P

Polymer Output: Up to 1.83 gph (44 gpd)  
Dilution Water Output: Up to 600 gph  
Typical Solution Concentration: 0.01%  
This unit is typically used for settling applications (clarification/filtration)

Features:

1. No moving parts to block or foul
2. Static mixing/aging vessel
3. Stainless steel construction (incl. pressure gauges)
4. Efficient make down of polymer with no waste
5. Post Dilution option available
6. Simplicity of operation

Other models available for:

1. Treating higher/lower flow waste streams
2. Auto polymer preparation in day tanks
3. Dry polymer feed
4. Explosion Proof applications

